



SWITCH-Asia Programme Background

SWITCH-Asia is a programme funded by the European Union (EU). Active in the Asian region since 2007, it seeks to promote Sustainable Consumption and Production (SCP).

The EU has further committed to supporting the transition of countries to a low-carbon, resource-efficient and circular economy through its 2019 EU Green Deal and Global Gateway, which along with the Paris Agreement and Sustainable Development Goals (SDGs), form the background of the programme.

The programme consists of two components:

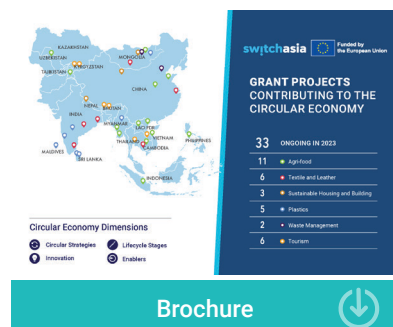
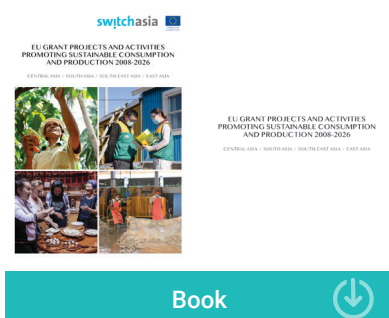
The Grant Component

The Policy Support Component (PSC)

The Grant Component

This component targets micro, small and medium sized enterprises (MSMEs). They are addressed through business organisations, research institutes and universities, and NGOs and consumer organisations willing to test and adopt more sustainable production and consumption processes, and improve the sustainability of their products.

Under this scheme, partnerships are established involving both organisations from the EU and from the region. The goal of this component is to facilitate the replication of sustainable production and consumption practices in MSMEs in the region. One hundred forty three projects were funded in the Asian region over a period of 15 years, implemented by consortia of Asian and European organisations.



The Policy Support Component (PSC)

Complementing the grants component, the SWITCH-Asia Policy Support Component (PSC) aims at building capacities of regional organisations and partner countries. It supports the transition to low-carbon, resource-efficient and more circular economic models in the target region. The PSC supports the development of policy frameworks and incentives for the green transition of the private sector and for changing current consumption patterns. The PSC also supports countries in complying with regional and international agreements related to environment and climate change, as well as contributes to regional policy dialogues on SCP. It facilitates engagement with relevant stakeholders and sharing SCP experiences with the EU and its Member States. It also serves as a knowledge hub and communicates experiences from and among the SWITCH-Asia grants.

The PSC works in 42 countries, spanning from the Middle East, to Central Asia, South Asia, East Asia, Southeast Asia and the Pacific. The PSC builds on the SWITCH-Asia programme's long and successful track record of providing technical assistance.¹ It also connects with the regional EU Delegations (EUDs)' programmes and priorities. Its mandate is to foster cooperation, strengthen networking and building a platform for exchange on SCP and circular economy. It therewith supports the region's governments in addressing the triple planetary crises and meeting international commitments, including the SDGs and the Paris Agreement.

Mode of Operation of the SWITCH-Asia Policy Support Component (PSC)

As **mode of operation**, the PSC liaises with and advises national governments and regional organisations and networks in the target region. The PSC provides on-demand advisory on scaling up SCP policy and implementation. In addition to advisory, the PSC also provides a platform for knowledge exchange, and builds capacities of regional institutions.

All activities rely on the strong engagement of partner countries and organisations in co-creating the requested policies, processes and other deliverables. Projects by the SWITCH-Asia PSC benefit several governments at once through a *multi-country or regional approach*.

Examples of intervention are support provision for achieving SDG 12 and SCP-related goals, integrating SCP into NDCs and climate-related actions, regional stakeholder engagement, with a particular attention to business and industrial representatives, and communicating on SCP. The priority sectors for assistance include agrifood, building and construction, plastic, tourism, textile, and financing for market transformation.

The PSC consists of a team of Key Experts (KEs) in the area of SCP focussing on different aspects of implementation, including policy advisory, knowledge exchange and stakeholder engagement. In support thereof, and with ambition of developing regional capacities, Non-Key Experts (NKEs) are mobilised for long-term (>12 months) and short-term assignments. The PSC is implemented for four years until December 2026.

Engaging with National Governments

The SWITCH-Asia PSC provides technical expertise through funding experts for technical assistance and advisory (TA) to the governments and regional organisations. The government appoints a "National Focal Point" (NFP) who coordinates the government's engagement with the SWITCH-Asia PSC.

Result

The SWITCH-Asia PSC strives to achieve meaningful contributions to support the region's progress on SCP and its transition to a circular economy. This can include the (co)development, with the national governments and regional organisations, of sector-specific Action Plans, providing support to exchange processes, as well as supporting policy development and implementation with analysis and recommendations. This progress is made visible by strengthening national monitoring and reporting processes of SDG 12 and other SCP-relevant SDGs, indicators and targets, as well as in the context of the NDCs / Paris Agreement.

¹ Examples of technical assistance (TA) provided at the previous stage of SWITCH-Asia Programme (until November 2022) can be found here - <https://www.switch-asia.eu/switch-asia/where-we-work/>

Where We Work

ASIA

Afghanistan
Bangladesh
Bhutan
Cambodia
China
India
Indonesia
Lao PDR
Malaysia
Maldives

Mongolia
Myanmar
Nepal
North Korea
Pakistan
Philippines
Sri Lanka
Thailand
Vietnam

CENTRAL ASIA

Kazakhstan
Kyrgyzstan
Tajikistan
Turkmenistan
Uzbekistan

MIDDLE-EAST

Iran
Iraq
Yemen

PACIFIC

Cook Islands
Federated States
of Micronesia
Fiji
Kiribati
Marshall Islands
Nauru
Niue
Palau
Papua New
Guinea
Samoa
Solomon
Islands
Timor Leste
Tonga
Tuvalu
Vanuatu



Contact Us

SWITCH-Asia Policy Support Component

info@switch-asia.eu



www.switch-asia.eu



EU SWITCH-Asia Programme
@EUSWITCHAsia



SWITCH-Asia
@SWITCHAsia



SWITCH-Asia Official
@switch-asia-official